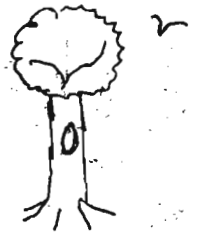


CASE ESTATES



Wednesday, July 8, 1992

Leaders:

Garen Corbett (332-4015)
Gordon Roble (244-9304)

Times: 8:45 A.M. - 3:00 P.M.

Trip slip # 6

Equipment:

Sneakers, shorts, Field
kits (what, no hiking boots?
Damn!), Lunch, 2 canteens,
Bike helmet, any spare bike
parts and tools you
might have. And finally

a BIKE that is in good working
order and preferably a 10-speed
or better.

Well, we're off to
Case Estates, an

interesting 112 acre site in Weston, owned by the
Arnold Arboretum. A lot of neat things are at
Case Estates - much of the area is devoted
to specialized collections of many types of
plants. From clematis to Cousa dogwoods,
Case Estates has a lot to see. This facility
is open to the public, there are plenty of
nice examples of a forest environment to a
manmade domesticated environments

Places of Interest at Case Estates:

- The barn - a neat 1927 building that was ahead of its time.
- Stone Wall - the largest freestanding ("drywall") wall in New England. Built in 1911, this south-facing wall provides a mild microclimate.
- An amazing Hosta display.
- Perennial Garden
- Rhododendrum Display Garden - will eventually cover 5 acres.
- The old Schoolhouse.
- The Stone Incinerator

And More

What's
In Bloom
when we're
at Case Estates

- Hostas
- Clematis
- Perennials
- Sourwoods
- Daylilies
- Turk's-cap lilies
- Ornamental onions
- Stewartsias

CASE

ESTATES



July 8, 1992

Leaders - Gordon - 244-9304

Garen - 332-4015

Times - 8:45 a.m. - 3:00 p.m.

Equipment - Bike, Helmet, two H₂O bottles (fill ~~one~~ with a sugary liquid for energy), Field kit, Lunch and sneakers.

Hola, today were going to case estates. This garden has a large collection of flowers, many of these flowers are hybrids. Do you know what a hybrid is? It is a very pleasant 14 mile bike trip to this 114 area acre. in Weston Mt.

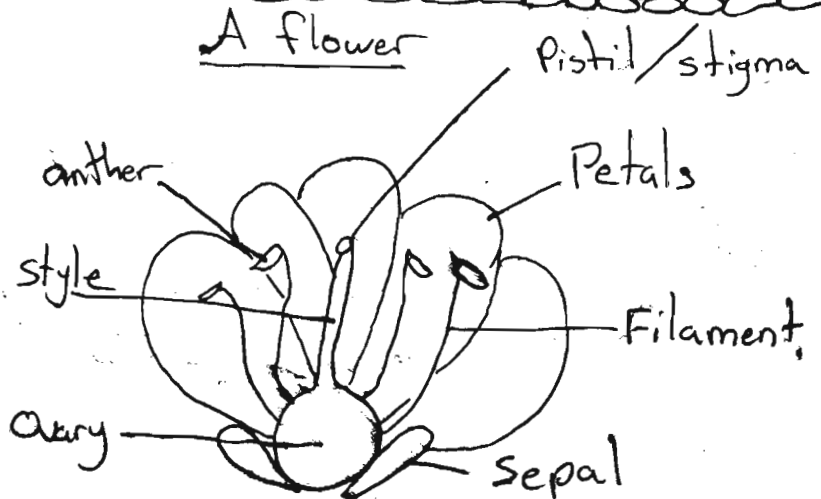
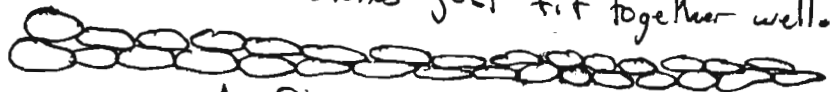
Rules of the Road

1. We will ride on the right side of the road.
2. Hand signals
 right: ✱
 Left: ✱ → these are your hands
 Stop: ✱
3. The riders will stay spread out as we ride.



More facts

Case estates has the largest dry wall in the world. A dry wall is a stone wall that is fitted together with out mortar or cement. The stones just fit together well.



CASE ESTATES



Trip slip #6
July 11, 1995

Leaders: Kathy - 527-3681
Gordon - 244-9304

Times: 8:30-3

Equipment: Bike, helmet,
day pack, lunch,
water, sneakers, not
boots!

Our destination today is to an area which contains several types of flowers, domestic as well as wild. There are also many hybrid plant and flower species there, meaning interbreeding done by something other than nature. We'll probably discuss the parts of the flower and how they function. Flowers are angiosperms, meaning they contain a seed. They are the largest group in the plant kingdom.

Case Estates also contains the largest drywall in the world. A drywall is held together by well-fit stones, not cement.

It's important today, on this 14-mile trip, to stay well spaced out or not get too far ahead of the group. We'll teach hand signals before we leave.

Some words to know...

Stamen - male reproductive organ of flower
Pistil - female reproductive organ.



What is the function of the petals?



Gordon Robb
Trip slip #6
7/11/95

Leaders - Gordon Robb - 244-9304
Kathy Thorpe - 527-3681

Times - 8:30am - 2pm

Met: at Brown

Equipment: Bike, Helmet, 2 H₂O bottles,
lunch, field kit, sneakers, Bike tools (if you
have them) - If you need anything call
your leaders!

This is a trip out to the scenic Case Estates in Weston. This fourteen mile trip to a beautiful 114 acre land owned by the Arnold Arboretum will provide with even more of a chance to acquaint our selves with both the natural living and dead.

Living

While we are at Case Estates we will see many, many plants called Hybrids. These are plants that are a cross between two different plants. Can anyone think why a gardener would do this? While we are at it we will also learn how to categorize plants according to a system of taxonomy, a classification chart developed by a great Scientist named Linnaeus. Incidentally even though he invented the system he has only one plant with his name in the latin.

~~Carol~~ Linnaeus borealis
(Twin flower)

Dead
While at Case Estates we will see the largest dry wall, a wall that is built completely without using any type of mortar or cement, in America and perhaps even the world. While we bike out there as well, we will see evidence of the Boston Basin. There is one large hill going there, which is much fun to coast home on, but this hill is the edge of the water line of where the ocean once came up to the edge. Boston used to be completely under H₂O. Newton As well.

Light + CO₂
(energy) ↓



Oxygen
The quick and easy
Photosynthesis

Linnaeus taxonomy

Kingdom - King
Phylum - Phillip
Class - Game
Order - over
Family - from
Genus - Germany
Species - smiling
I'll explain this more tomorrow, but the right side is a mnemonic to remember the left side!

Trip slip #8
July 12, 1996

Leaders:

Jenny Casavant
(969-2776)

Allan Telio
(969-4057)

CASE ESTATES

→ 8:30 AM - 3:00 PM

★ ★ ★ ★ ★ ★ ★ ★ ★ ★

★ THIS IS A ★

★ BIKE TRIP! ★

★ ★ ★ ★ ★ ★ ★ ★



★ EQUIPMENT ★

Bicycle, Bike Helmet (mandatory),
Bike Tools (if you have them), Field
Kit, Lunch, H₂O, SNEAKERS!
NO BOOTS!

Today we will be biking to
Case Estates. The Case Estates
are in Weston. When we get

there we will get to see lots of cool hybrid plants + flowers.
What is a hybrid, you ask? A hybrid is when something, other than
nature, forces two different species to interbreed. Therefore
we will see some cool plants that don't occur naturally in nature

Also Case Estates is home to the world's largest dry wall. A dry
wall is a wall that is held together without cement, but with
well fitted stones.

A Dry Wall



So get ready for another
fun-filled adventure,
courtesy of Envi-Sci!!

Things to remember
while we're biking:

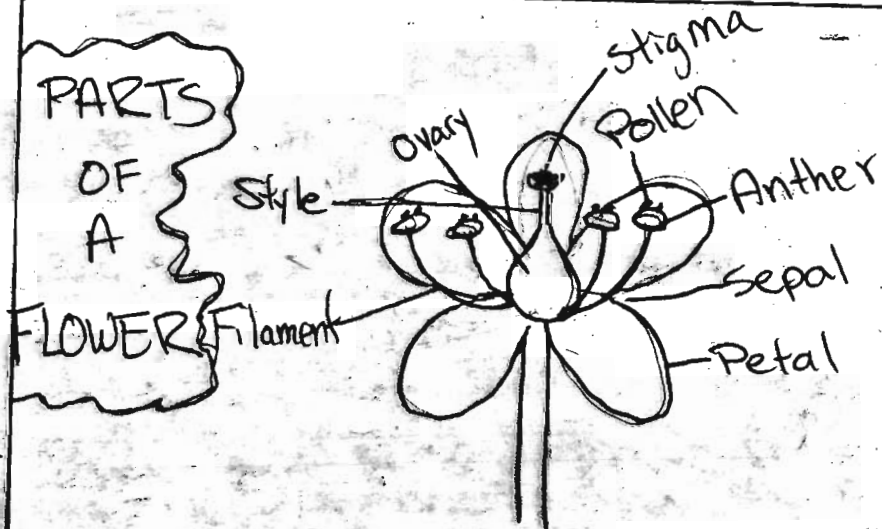
① Stay to the right side
of the road

② Stay in a single file
line

③ Stay well spaced out

Q: Do you remember your
hand signals?

PARTS OF A FLOWER



CASE ESTATES

Date: 7/9/92

Leaders: Delio Tramontozzi & Stacy Sanchez

Phone #'s: 244-3377 965-4988

Time: 9am - 3pm

THIS IS ANOTHER BIKE TRIP! ^{yeah!}

Equipment: A bicycle, A bike helmet, bike tools (if you have any), your field kit, LUNCH, SNEAKERS! HELMETS!

Today's trip to the Case Estates will be a peaceful 14 miles. Case Estates in Weston contains many hybrid plants and flower species. What is a hybrid? It is when you interbreed two different types of species together by a force other than nature. When you do this you can end up with some very pretty flowers that don't naturally occur in nature. Also Case Estates has the world's

largest Drywall →



A wall without cement held by well fitted stones.

On a somewhat long trip like today's we must work together. Stay in a single file line along the right side of road, and when we turn - we will use our hand signals RIGHT!



Left



Right



STOP!

And stay well spaced out!

We'll get ready for some really pretty flowers and an awesome bike ride. Case Estates is in Weston, therefore we are guaranteed a nice ride along the way.

Trip slip # 6

7/8/99



CASE ESTATES

Featuring:
Michael DYEN as
the guy who rides
at the end of the
line (244-0285)

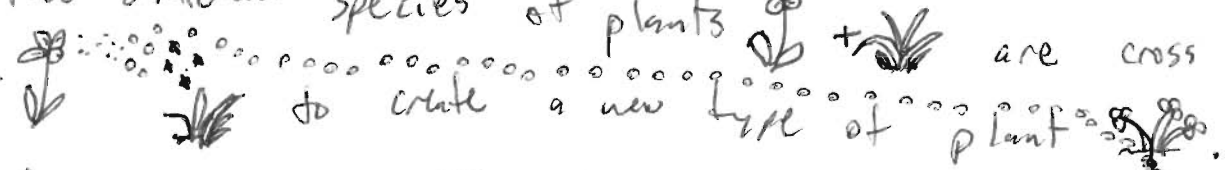
Equipment: bicycle, HELMET, fiddbit, lunch, max water than
you could shake a stick at, sneakers.

PLACE: Brown TIMES: 8:30 - 3:00

Grabe and
Yospin as
the guy who can
ride wherever he
wants 'cause he's in
good shape.

Case Estates is an 114 acre of land in Weston that is owned by the Arnold Arboretum. We are going to see many different types of plants here, including some special plants that do not naturally occur in nature. They are manmade plants that they are hybrids. A hybrid is, among other things, when two different species of plants are cross fertilized to create a new life of plant.

When do you think something like this could be useful? Food for thought



Trip slip #6

7-8-99

Leaders: Gabe The Great: 969-3966

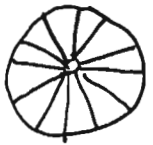
Mike The Magnificent: 244-0285

Times: 8:30 AM - 3 PM

Place: BMS

STUFF: A bike, a bike helmet, bike tools (if you have them), H₂O, lunch, sneakers, a sweet beverage if you so desire.

↙ bike trip!



CASE ESTATES

Case Estates is an old mansion, at the top of a hill in Weston (yes, we will be biking up the hill, & anyone who complains about it will be pulling me behind them). The Estates are now a

Hey! What's that? It's the world's largest dry wall, found only at Case Estates *

part of Arnold Arboretum, although the types of plants out in Weston are generally more flowers & small shrubs than big trees, although there are some hundred year old Chestnut trees & the like.

Here's how to signal:



* A dry wall, for those of you who don't know, is a wall that is made without any concrete. It takes real skill to build one, so don't think: "Oh, what a dumb wall, who cares about walls, walls don't do anything, blah blah blah"

you all need to think about little things like that, and you also need to stop caring more about those of you that would say that I'm rambling forever to write. See ya tomorrow!

Case Estate

Tripslip # 8

Leaders: Allan (969-4057)

Jenny (969-2776)

Times: 8:30-3:00

Equipment: Bike, Helmet, Field Kit, Lunch, Water, Sneaker (NO BOOTS)

Today we will be going to the wacky land known as Case Estates. This 114 acre piece of land in Weston is owned by the Arnold Arboretum and will provide us with a wonderful chance to see many different types of plants. Some of the plants that we will be seeing are hybrids. A hybrid plant is formed when two different species of plants are cross fertilized by man in order to make a new type of plants. This can be very useful in certain types of situations. We shall discuss this when we arrive.

When we are there we also learn about how to categorize plants according to a system of taxonomy, a classification chart developed by the wonderfully wild scientist named Linneaus. Incidentally even though he invented the system he has only one plant with his name in the Latin. Linneaus borealis (Twin Flower)

Linneaus taxonomy This will all be explained

Kingdom- King tomorrow.

Phylum- Philip

Class- came

Order-over

Family-from

Genus- Germany

Species- smiling.

CASE ESTATES

Date: 7/9/92

Leaders: Delio Tramontozzi & Stacy Sanchez

Phone #'s: 244-3377 965-4988

Time: 9am - 3pm

THIS IS ANOTHER BIKE TRIP! ^{yeah!}

Equipment: A bicycle, A bike helmet, bike tools (if you have any), your field kit, LUNCH, SNEAKERS! HELMETS!

Today's trip to the Case Estates will be a peaceful 14 miles. Case Estates in Weston contains many hybrid plants and flower species. What is a hybrid? It is when you interbreed two different types of species together by a force other than nature. When you do this you can end up with some very pretty flowers that don't naturally occur in nature. Also Case Estates has the world's

largest Drywall →



A wall without cement held by well fitted stones.

On a somewhat long trip like today's we must work together. Stay in a single file line along the right side of road, and when we turn - we will use our hand signals RIGHT!



Left



Right



STOP!

And stay well spaced out!

We'll get ready for some really pretty flowers and an awesome bike ride. Case Estates is in Weston, therefore we are guaranteed a nice ride along the way.

CASE ESTATES

Stacy's trip slip # 7
July 9, 1992

Times: 8:45 am - 3:00 am

Leaders: Stacy (965-4988) and Delio (244-3377)

Equipment: bicycle, bike helmet (this is mandatory; if you don't have one then tell me), bike tools (if you have them), field kit, lunch, H₂O, sneakers - NO BOOTS!

Come here (Newton South) at 8:45 so we can check your equipment before we leave. Remember to follow biking

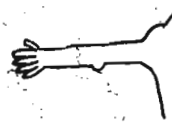
Rules while riding: ① stay on the right side of the road
② use hand signals:



to turn right



to turn left



to stop



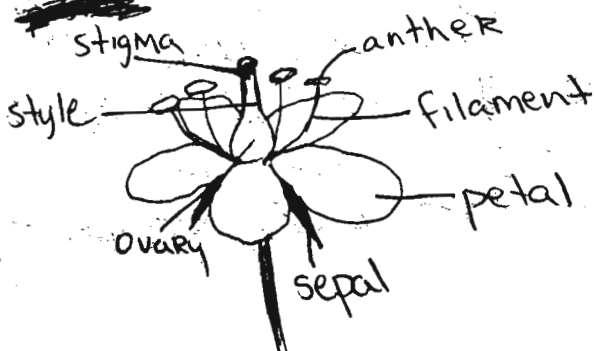
③ stay well spaced out

The case estates, in Weston, contain many different types of flowers. The world's largest dry well is also in case Estates.



← a dry wall is a wall without cement; it stays together because the stones are well fit together.

parts of a flower:

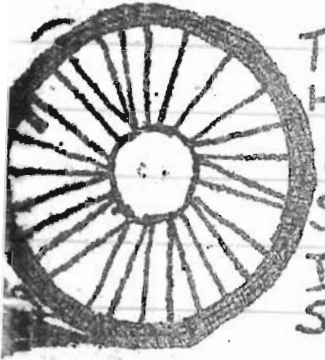


stamen: male reproductive organ; contains anther and filament
pistil: female reproductive organ; contains ovary, stigma, and style

TRIP #10
 DATE: July 18, 1989
 EARLESS LEADER

Cole W.D. Stanton
 (964-5857)

CASE ESTATES 9AM-3PM




THICK
 LIKE
 STRIPS
 BIKE
 TRIP!

- OBJECTIVE:
- (1) To get some exercise.
 - (2) To observe one of the more beautiful ways in which man has interacted with and altered his/her environment.
 - (3) Observe and study some neat plants & flowers!

EQUIPMENT:

- A Bicycle.
- Bicycle Repair Tools (whatever you have)
- Field Kit
- Lunch
- Sneakers - No Boots!

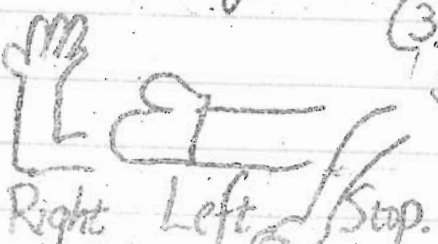
The Case Estates in Weston are a large collection of famous flower gardens containing many hybrid species not occurring together in nature.

There is also the world's largest dry wall.  (A wall without mortar well filled together ~~with~~ from cut stones)

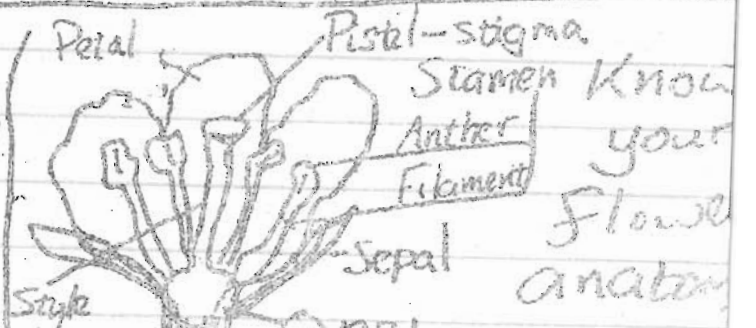
Naturally since this is a bike trip we must follow the E.S.P. rules of the road.

Get your flower power together and let's go Case the place!!

- (1) we will ride on the right side of the road.
- (2) Hand Signals.



(3) All Bikeriders should stay well spaced out!



Trip #13 7/23/74
Leader: ANN 527-4687
Time: 9 AM - 3 PM
Site: Weston Case Estates


Equipment: A ~~Bike~~ Bike
sneakers, shorts, your
complete pack, Newton
street map, Newton-Natick
topographical map, a
lunch, a canteen, an
extra canteen, and
some useful tools; like
a spare inner tube, a
patch kit, tire irons,
a wrench (if you have
them), and a Bike

Rules: ~2~
1) we will ride on
the right side of
the road
2) we will use hand
signals
a) right 
b) left 
c) stop 
3) all bike riders
should stay well
spaced out!

~3~
Permission Slip
To be signed and
returned before
you may ride
* * *
I give my permission
for _____ to
participate in the above
mentioned trip.
I understand that
Environmental Science
assumes no responsibil-
ity for encountered
accidents. Patience
and good judgment
will be exercised at all
times (signed)

~4~
Objectives:
1) observe & study
plants
2) get some exercise

Grist for the Mill:
Why are the Case
Estates a good
testing ground for
plants bound for
the Arboretum
why aren't conifers
deciduous trees

~5~
What's a clone
What's in a name
"Cornus kousa"
genus species
Where did the
Orange  navel
come from
Where does mulch
come from
Where did the
"Hosta" clones
come from

~6~
How to get there from
Here to Parker St.
left Parker St. to Rte 9
right Rte 9 to Quinobequin Rd
left Quinobequin Rd to Wash. St.
right Wash St. to Glen Blvd
right Glen Blvd. to Wellesley St.
135 Wellesley St. to the
Weston Case Estates
of the
Arnold Arboretum
note: eating on the grounds
is prohibited, we will
EAT elsewhere

Case Estates

Trip slip # 12

Time: 9:00-3:00

But be hear at 8:30

Date:

July 18th

Leaders: Beth Ann (332-2827)

+

Delio (244-3377)




1990

equipment: BIKE and two water bottles and You.

You do not need to bring your boots, just wear sneakers.

Also if you have any bike repair tools please bring them they might come in handy.

The Case Estates in Weston are a collection of famous flower gardens. These contain many hybrid species not seen in nature.

Since we will be going on a bike trip you will have to know signals a) right  b) left  stop 
We should also stay well spaced out.
There will also be a dry wall that we will get to see.
A dry wall is a wall without ~~any~~ stuff to hold it together. The stones are just fit well together.

Today you will also learn the parts of a flower.



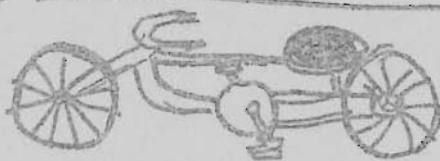
Did you know that riding your bike helps the environment. Try to ride your bike instead of getting a ride because you will not get a ride.

CASE ESTATES

Time: 9 AM - 3 PM

DATE: July 18th, 1990

Leaders: Delio Tramontozzi + Bethann D'agostino
(244-3377) (332-2827)



← this is a bike... rea

Trip slip #12

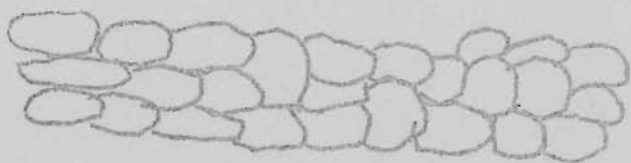


← not a hike

Equipment: A bicycle, A bike helmet, bike tools, (if you have them), field kit, Lunch, sneakers - NO BOOTS

The Case Estates in Weston are a large collection of famous flower gardens containing many hybrid species not occurring together in nature.

We will see the worlds largest dry wall.



← a wall without cement that is held together by being well fitted.

Dont forget the rules of the road!

- ① right side of road
- ② Hand signals
- ③ Stay spaced out

